

LANDEX® (Emulsion explosives)

Combined use of LANDEX® with the "pneumatic loader" developed by Kayaku Japan and the non-electric initiation system (non-electric detonator), enables blasting work with high safety and efficiency.

▶ LANDEX® Blasting System



1 Safety

- No need to get close to the tunnel face in charging.
- Possible to check the condition of the tunnel face in charging.
- Adoption of a non-electric detonator ensures safety against static electricity, leak current, etc.

2 Workability

- Save time for charging and connection.
- Mechanical loading reduces the burden of workers.

3 Handling

- As with ANFO explosives, Granulated emulsion explosives have facilitated mechanical loading.

4 Environmental responsiveness

- Reduced generation of fumes
- Available for use in any type of water hole including lifter hole.



Before pneumatic loading



After pneumatic loading

Performance table

Brand name	Bulk density	Load density	Detonation velocity(m/s)	Ballistic pendulum	Water resistance	Fumes	JIS drop hammer test	BAM friction sensitivity test
LANDEX®	0.93~1.13	0.7~0.8	3,500~4,000	66~72	Excellent	Best	8th grade	7th grade

Package table

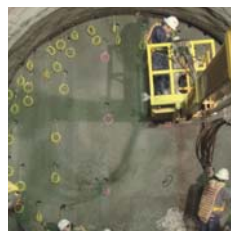
Brand name	Inner package		Package size		
	Weight (kg)	Number of bags	Net weight (kg)	Gross weight (kg)	Carton size D×W×H(mm)
LANDEX®	10	2	20	22	580×330×255



LANDEX® Loader



Charging of LANDEX®



Kokusai Fashion Center Bldg. 9F, 1-6-1 Yokoami, Sumida-ku, Tokyo 130-0015, Japan
Tel:+81-3-5637-0901 Fax:+81-3-5637-0940